

San Francisco State University Retirement Association

June 2012

SFSU Retirement Assn. c/o Development Office 1600 Holloway Avenue, ADM153, San Francisco, CA 94132 www.sfsu.edu/~retire email: retire@sfsu.edu

PRESIDENT'S CORNER

By Tom Spencer

WELCOME DR. WONG

Members of the San Francisco State University Retirement Association (SFSURA) extend a very warm welcome to you, Dr. Wong, and to your family. We look forward to getting to know you, to learn of your vision for our campus, and to offer you whatever expertise and “wisdom” we might have to contribute based upon our many years of service. Our very best wishes to you as you begin your leadership of SFSU as our 13th President.



CSU Trustees Appoint Leslie E. Wong as President of SF State

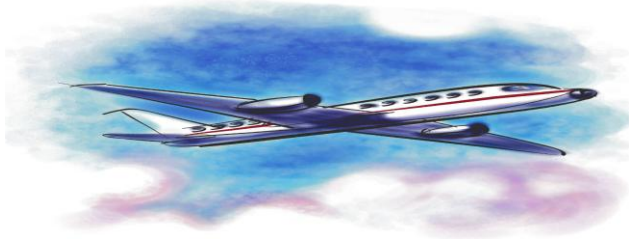
The California State University Board of Trustees on May 9 appointed Wong to succeed Robert A. Corrigan, who is retiring after 24 years as SF State's president. Wong, an Oakland native, is currently the president of Northern Michigan University in Marquette, MI, a position he has held since 2004. He has also served as vice president for academic affairs at Valley City State University in North Dakota and as provost, academic vice president and interim president at the University of Southern Colorado.

Wong graduated from Oakland's Bishop O'Dowd High School -- where he met his wife, Phyllis. He received his bachelor's degree in psychology from Gonzaga University, his master's in experimental psychology from Eastern Washington University and his doctorate in educational psychology from Washington State University.

Above Excerpts taken from SF State News-University
Communications

SFSURA TRAVEL GRANTS AWARDED

By Dan Buttlair



This year the SFSURA Travel Award Committee received applications for travel grants from 42 faculty members (24 women and 18 men). Almost all of these applicants have very limited or no sources of travel funds. These faculty members are from 34 different academic departments, and their academic ranks are: 10 professors, 8 associate professors, 1 associate librarian, 19 assistant professors, and 4 lecturers.

Travel grants of \$500 were awarded to 7 faculty members: 4 women and 3 men, six assistant professors and one associate professor. The large number of excellent applications made the selection process quite challenging, and we were unable to support many meritorious applications due to limited funds in the Endowment Fund. The following faculty members were awarded travel grants:

Assistant Professor Cheng Chen, School of Engineering, is attending the 3rd International Structures Specialty Conference to be held in Edmonton, Alberta, Canada. He will deliver an invited oral presentation of the results of his collaborative research in earthquake engineering with an undergraduate student in the "Advances in Simulation Methods for Civil Structures session." He also will utilize this conference to communicate with researchers and seek future collaboration

opportunities with them to utilize his state-of-the-art servo-hydraulic equipment for earthquake engineering research at SFSU.

Assistant Professor Jason Gurdak, Geosciences Department, is attending the 39th International Hydrologists Congress and the Groundwater@Global Palaeoclimate Signals (G@GPS) meeting, which are back-to-back meetings in Niagara Falls, Canada. He will deliver an oral presentation of the major science findings and policy recommendations from a new book that he co-edited about global study of climate changes effects on groundwater in thirty countries. This talk will be presented in the "Groundwater and Climate Change: Linkages and Adaptation" session that he was invited to co-convene. He is also coordinating a planning and organization meeting of a new international initiative called G@GPS.

Assistant Professor Julietta Hua, Women and Gender Studies Department, is attending the annual International Meeting of the Law and Society Association in Honolulu, Hawaii. She will be presenting a paper on her new research project, "The Limits of Humanity: Affects, Rights and Animals." This paper considers how the legal discourse of "animal rights" might define and limit the terms of humanity. She will also serve as chair and discussant on a panel entitled "Gender and Social Movements for Human Rights." Her research in this area considers the question of who and what becomes legible as a women's human rights.

Assistant Professor Kwong-Liem Karl Kwan, Counseling Department, will attend the annual convention of the American Psychological Association in Orlando, Florida. He will chair a research symposium and present a research paper on the influence of stigma on psychological help seeking. He will also attend a professional development workshop on measurement and statistical

strategy. Moreover, as a forum editor of the journal *The Counseling Psychologist*, he will attend a business meeting with the publisher and mentoring sessions for prospective authors who desire to submit manuscripts to the journal. Furthermore, he will meet with a research collaborator to work on and update a book project.

Associate Professor Nina Roberts, Recreation, Parks, and Tourism Department, will attend the 1st International Symposium on Speaking Up and Speaking Out: Working for Social and Environmental Justice Through Parks, Recreation, Tourism, and Leisure in Salt Lake City, Utah. She will be presenting the topic of multiracial experiences from a multicultural lens. She also has been invited to participate in a panel presentation entitled “Embarrassingly White: Changing the Color of Higher Education in Parks, Recreation, and Leisure Studies.”

Assistant Professor Valerie Soe, Asian American Studies Department, will attend the Los Angeles Asian Pacific American Film Festival. She will be presenting two of her new short projects: a documentary film entitled *The Chinese Gardens* and a lecture entitled “Gangsta Gangsta: Hong Kong Crime Films 1986-2011.” *The Chinese Gardens* (documentary) looks at the lost Chinese community in Port Townsend, WA, examining racism against the Chinese in the Pacific Northwest in the late 1800s, from the Chinese Exclusion Act of 1882 through various lynchings, beatings, and murders. The film draws connections between past and present race relations in the U.S. This will be the Los Angeles premiere of the film.

Assistant Professor Tomoko Takeda, Foreign Languages and Literature Department, will attend the Northwest Conference on Japanese Pedagogy in Seattle, Washington. She will be presenting her research entitled “How BBS Interaction with Native Japanese

Speakers Benefits JFL Learners.” This study examined Bulletin Board System (BBS) exchange between 23 Japanese as Foreign Language (JFL) learners of a college level intermediate Japanese class and 16 Japanese college students in Japan. The findings demonstrated the benefits of incorporating computer-mediated communication in a regular course curriculum to promote a positive language learning environment.

**CONTRIBUTORS TO THE
RETIREMENT
ASSOCIATION
ENDOWMENT FUND TO
HELP FUND
TRAVEL/PROFESSIONAL
DEVELOPMENT FOR
CURRENT FACULTY AND
STAFF.**

*Patricia Werthimer; Jack
Byers, (in memory of Alex
Flett); Marcia Allsopp; Ralph
Larson; and V. V. Krishnan*

Contributions to the Endowment Fund can be made by check, payable to the SFSURA and mailed to our Treasurer, Jim Van Ness, 922 Evergreen Way, Millbrae, CA 94030

SAN FRANCISCO STATE'S HISTORY CORNER

Dean Mary Ward's Sage Advice during Hard Times

By Meredith Eliasson

After her short tenure as Acting President in 1927, San Francisco State alumna Mary Ward returned to her duties as Dean of Women. Students fondly called her "Dean Mary." In October 1929, the stock market crashed, causing financial ruin for many. Mary Ward, Dean of Women, suggested that women perform housekeeping to augment their income. Ward stated in the August 20, 1931 issue of *Bay Leaf*, "In these alleged depressing times many women students are in need of part-time work to supplement the small allowances provided by their fathers."

Ward suggested fair guidelines for employment during difficult economic times, including a wage scale of thirty-five cents per hour for care of children and light housework preparing meals, cleaning floors and ironing. Ward insisted that female students caring for children until or after ten o'clock at night "must not be allowed to return to their homes alone." Ward established the first student loan fund program, administered by the Parent-Faculty Club, to assist financially strapped students on campus during the Depression.

Ward was an early graduate of San Francisco State Normal School and a dedicated disciple of founding president Frederic Burk. She was appointed assistant supervisor in teaching arithmetic and reading in 1906. A year later she was promoted to supervisor of assignments and Dean of Women. While working on campus, she started graduate work

at Stanford University in 1929, earning her M.A. degree in 1934. Dean Ward insisted in the *1931 Franciscan*, "The well-equipped buildings, fine faculty, rich curricula are the framework but not the cornerstone upon which the greatness of a college rests. College leadership is dependent upon the professional skill, personal character and ideals of its graduates." President Alexander Roberts remembered, "many pleasant relationships with Mary Ward linger in my memory, and many problems that might have floored me were already settled and on their way out before they even reached my desk." Ward had the ability to provide individual attention to people in a growing and changing campus. President J. Paul Leonard observed that Ward, "helped nurture the college in its adolescence, and suffered its disappointment during the Depression."

After the Depression, Ward purchased a ten-acre ranch in Saratoga, making her the first prominent commuter at San Francisco State, which since has often been referred to as a "commuter campus." According to one of Mary's sisters, Ward didn't know "how to use a hammer until she moved to Saratoga." She was self-taught in remodeling, and read books on construction, so when she went to the local hardware store, the shopkeeper commented, "Say, you know more than most men about this equipment." Ward remodeled her 8-room house recycling lumber for her new hardwood floors; she eventually erected a small guesthouse so that her sisters and their families could visit; and leased her apricot and prune orchards to local farmers to tend and cultivate. Ward's commute from Saratoga to the campus in the heart of San Francisco began at 7:30 am, and ended when she returned home at 9:00 pm.

She commuted alone with a Dictaphone in her car, commenting, "I do all my thinking on these trips."

IN MEMORIAM

Don Barbee, died April 1, 2012, age 84, in Seattle, WA, Professor of Educational Administration, 1960-1990.

Bernice Biggs, died February 3, 2012, age 89, in San Francisco, Professor of English, 1950-1992.

Peter Malcolm Dewees, died May 28, 2012, age 77, in San Francisco, Dean of College of Extended Learning for 21 years.

Mary Hearne, died May 31, 2012, age 96, in Falls Church, VA, Professor of Education, 1962-1973.

Jilma Marshall died May 3, 2012, age 86, in San Francisco, Library bookbinder for many years.

Siegfried (Fred) Neustadter, died April 27, 2012, age 89, in San Francisco, Professor of Mathematics, 1958-1993.

NOTE: For the historians in our group, how many of the 13 presidents (not including 3 acting presidents) can you name? Can you put them in order? Try your hand at this before turning to page 7 for the answers. Good luck!

At the invitation of the SFSURA, President Corrigan's Farewell Message



I must say that this is both an opportunity and a challenge – writing a piece to a group – the Retirement Association of which I am soon to become a member – discussing part of SF State's history with some folks that may know it better than I do. But As I prepare to step down as SF State's president after 24 years of service, I am acutely aware of what a remarkable institution I have been privileged to lead. These last decades have been transformational ones. The campus has moved beyond the divisions and tensions left by the 1968-69 strike – attitudes that were still much in evidence when I arrived 20 years later – to become a community that is unified and guided by an unusually strong set of educational and social values, chief among them a commitment to social justice and equity, access for a diverse population,

community-focused research, and public service.

This clarity about who we are and what we mean to California, and, indeed, to the nation, has enabled us to attract top faculty - 73% of whom are women and/or people of color. They come with doctoral degrees from the nation's most prestigious research universities – bringing with them a commitment to teaching and an eagerness to work with our diverse population of students and colleagues.

Students want to study with such faculty and in turn, we have moved from being a commuter campus, drawing students mostly from the immediate vicinity, to a “destination campus” – the university of choice for a significant number of students who come to us from across the state, beyond California, and from other nations. In fact, we rank second nationally among master's degree institutions in international student enrollment.

We have become a valued community partner, applying faculty expertise and student energy to research and projects that address our region's top concerns – K-12 education, the health of the Bay, economic development, families and neighborhoods, and more.

We have, in the last 20 years, virtually remade the campus physically, enlarging our footprint by almost 50%, with new academic and student facilities. Our academic excellence is reflected both in faculty scholarship and awards and in the achievements of our students. One particular point of pride is our success as a pipeline for students from underrepresented groups who are being accepted into – and graduating from -- top science doctoral programs across the nation. Our nation cannot afford to waste talent – and at SF State, we don't.

For these and many other achievements, SF State has won national recognition. One of just six universities last year to receive the top

award in the President's Higher Education Community Service Honor Roll; one of five to receive the 2012 Senator Paul Simon Award for Comprehensive Internationalization; selection by the Princeton Review as “a college with a conscience”; two SF State faculty honored at the White House in the last two years – these are just a few.

And here is where my thoughts shift from appreciation of this splendid institution to concern. My personal investment in SF State is deep. You --the former faculty and staff who have helped to make this the institution it is today – certainly care as strongly as do I about its future well-being. We're well aware of the unprecedented reductions in state funding of recent years. SF State has coped with them creatively and well, but we, like the CSU are reaching our limit. A recent *San Francisco Chronicle* headline illustrates the seriousness of the situation: “Cal State to Close Door on Spring 2013 Enrollment.” Without college access, the social and economic divide that is poisoning the nation will only increase. Families and students are doing what they can – more than they ever have been asked to do before. Private donors are stepping up. But the third leg of the stool is legislative and gubernatorial support, and here we are hampered not just by economic issues but by a political process that is often driven more by quick gains than long-term public good.

This institution that means so much to us needs our energy, our voices, now more than ever. We need to speak up, to rally support, and make the case for the great good that SF State and our public higher education colleagues do for our shared society.

Over the past several decades, this campus has made extraordinary progress toward the goal I set early in my presidency: to see us recognized as the nation's preeminent public urban university. I am confident that we

have the talent, the momentum, and the will to reach that goal.

As I conclude both this message and my term as president, let me also express my great appreciation for all that you have done over the past half century, or more, to build a campus that is one of the best in the nation. Many thanks.

-- Robert A. Corrigan

ANSWERS TO THE PRESIDENTS QUIZ

Frederic Lister Burke (1899-1924)

Archibald Barron Anderson (1924-1927)

Mary A. Ward (1927) Acting

Alexander Cripin Roberts (1927-1945)

John Paul Leonard (1945-1957)

Glenn S. Dumke (1957-1961)

Frank L. Fenton (1961-1962) Acting

Paul A. Dodd (1962-1966)

Stanley F. Paulson (1965-1966) Acting

John Henry Summerskill (1966-1968)

Robert Smith (1968)

Samuel Ichiye Hayakawa (1968-1973)

Paul F. Romberg (1973-1983)

Chia-Wei Woo (1983-1988)

Robert A. Corrigan (1988-2012)

Leslie E. Wong (2012-)

Bookstore Decision: Franciscan to Follett

Franciscan Shops *no more*. At its June 5th meeting, the Board of Directors of the University Corporation voted 7-1 to award the SFSU bookstore management contract for the next five years to Follett Higher Education Group, a privately held multi-billion dollar family-owned company. The new management is expected to take effect July 1, 2012.

Among other things, Follett will guarantee a return to SFSU for operational needs as well as contribute \$10,000 to university scholarships.

A special thanks to all the employees of the Franciscan Shops and especially to Rob Strong, General Manager, for decades of outstanding personalized service and easy accessibility to faculty and students alike.

“Times they are a changin.”



Where have we been???



Lundberg Glass Studio, Davenport



Talented Artisans at Work.



Beautiful Glassware for Sale



After a fabulous tour of the Tsars exhibit in Sonoma and a wonderful lunch, we came together for a group photo.

Where are we going next??



Thursday, September 13, 2012 The Romberg Tiburon Center for Environmental Studies (RTC) is San Francisco State University's marine and estuarine research facility. The Center is situated on a breathtaking 36 acre parcel of bay front property located just outside the town of Tiburon, California. The Center's location is an ideal setting for our scientists and students to conduct their research -- much of which focuses on understanding the natural forces at work in the San Francisco Bay and its surrounding wetland environments. The agenda for the day will be:

- 10:30 – 11:00 *Arrival time (coffee/tea available at Conference Center)*
- 11:00 – 12:00 *Presentation by Toby Garfield, Director of the Center*
- 12:00 – 1:00 *Catered- in hot lunch*
- 1:00 – 2:00 *Tour of research labs in Building 36*

Cost is \$30 per person. Please send your check (payable to SFSURA) and this reservation form to Kay McGough, 3742 Brunswick Ct., South San Francisco, CA 94080. Transportation is by your own vehicle. Please carpool if you can. If you have questions or need a ride, call Kay McGough at 650-754-0677.

Name _____ Phone _____

Email _____ I need a ride My address is _____

Number of Reservations _____ Amount Enclosed \$ _____ I can drive and take _____ more passengers.

San Francisco State University
 c/o Development Office
 1600 Holloway Avenue, ADM 153
 San Francisco, CA 94132
www.sfsu.edu/~retire

Board of Directors Officers

- Tom Spencer, *President*
- Julian Randolph, *VP & Membership Director*
- Donna Ryan, *Secretary*
- Jim Van Ness, *Treasurer*
- Newman Fisher, *Past President*

Members at Large

- Mamdouh Abo-El-Ata
- Richard Giardina
- Dan Buttlair
- Iza Goodfield (*UAW Rep*)
- Larry Ianni (*ERFA Rep*)
- Bernice Lawry
- Yolanda Thompson (*Events*)

Nominating Committee

- Evelyn Ballard (*Chair*)
- Richard Giardina
- Helene Whitson

Travel Grant Committee

- Dan Buttlair (*Chair*)
- Mamdouh Abo-El-Ata
- Julian Randolph

Web Page Maintenance

- John Stenson

Publications Editor

- Kay McGough